

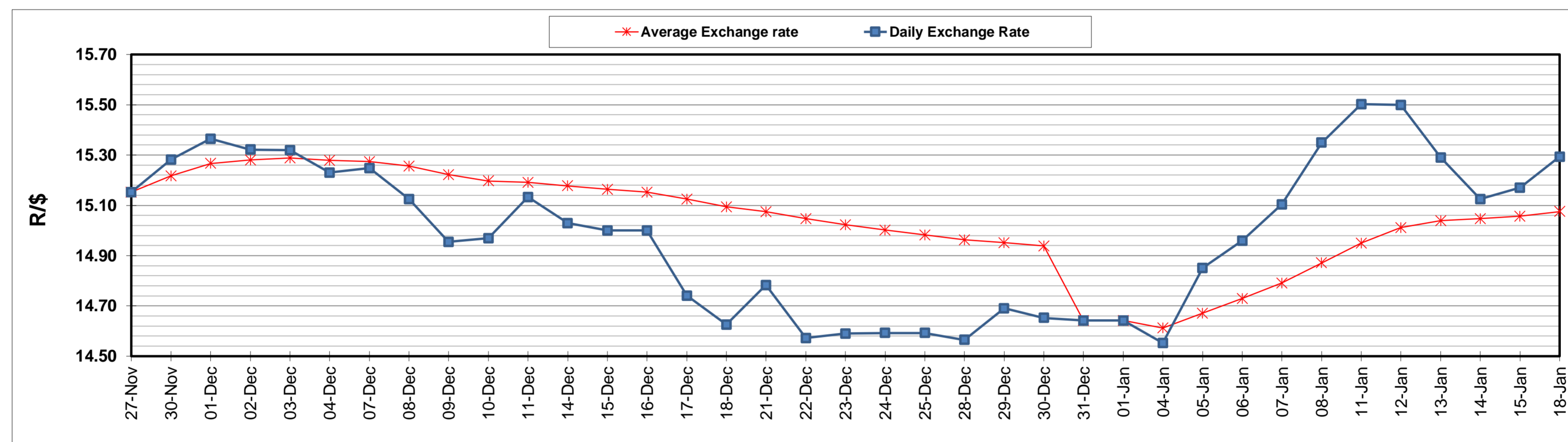
	PETROL 95 ULP	PETROL 93 ULP & LRP	DIESEL 0.05%	DIESEL 0.005%	ILL. PAR.
GAUTENG PUMP PRICE (SA c/l) AS FROM 06/01/2021	1,486.000	1,469.000	-	-	-
WHOLESALE PRICE (SA c/l) AS FROM 06/01/2021	-	-	1,300.420	1,301.820	739.688
SINGLE NATIONAL MAXIMUM RETAIL PRICE	-	-	-	-	930.000
BASIC FUEL PRICE - 18/01/2021 (SA c/l)	603.694	596.356	603.697	605.333	592.467
PRESS RELEASE CONTRIBUTION TO BFP 06/01/2021 - 18/01/2021 (SA c/l)	519.170	512.170	541.630	543.030	527.128
UNIT OVER/(UNDER) RECOVERY - 18/01/2021 (SA c/l)	(84.524)	(84.186)	(62.067)	(62.303)	(65.339)
AVERAGE BASIC FUEL PRICE 31/12/2020 - 18/01/2021	585.930	579.005	585.035	586.995	572.876
AVERAGE UNIT OVER/(UNDER) RECOVERY 31/12/2020 - 18/01/2021	(79.068)	(80.065)	(60.328)	(60.580)	(62.671)

ANALYSIS MOVEMENT OF AVERAGE OVER/(UNDER) RECOVERY

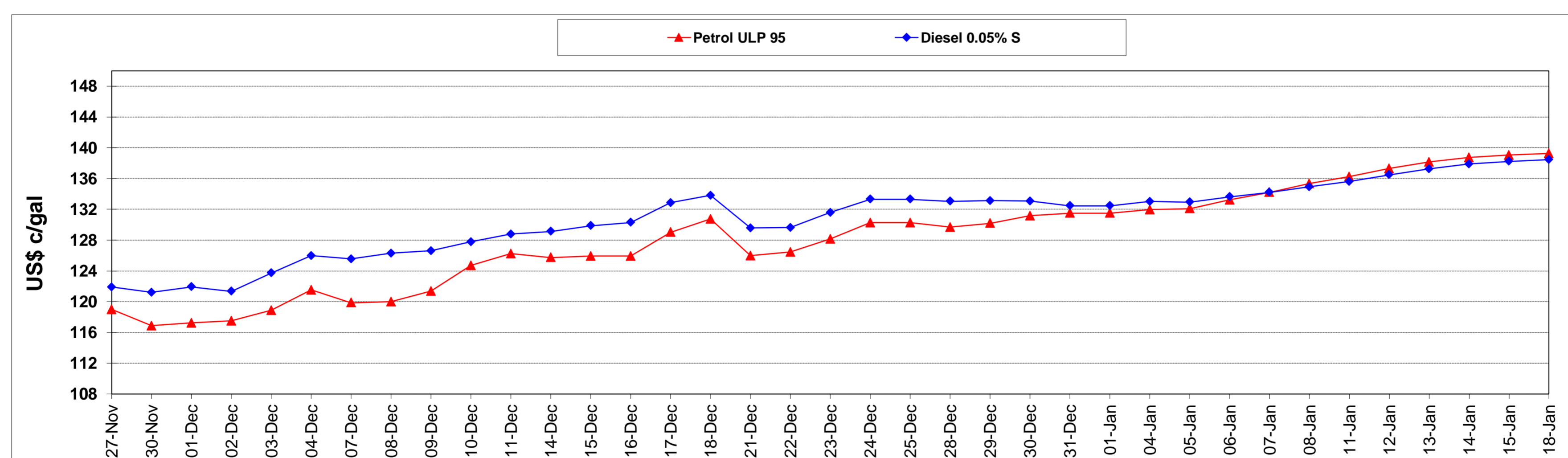
	PETROL 95	PETROL 93	DIESEL 0.05%	DIESEL 0.005%	ILL. PAR.
- MOVEMENT IN INTERNATIONAL PRODUCT PRICES	(73.767)	(74.827)	(55.035)	(55.269)	(57.488)
- MOVEMENT IN EXCHANGE RATE	(5.301)	(5.239)	(5.293)	(5.311)	(5.183)
AVERAGE UNIT OVER/(UNDER) RECOVERY 31/12/2020 - 18/01/2021	(79.068)	(80.065)	(60.328)	(60.580)	(62.671)

R/\$ EXCHANGE RATE - (R/\$15.2940 - 18/01/2021)

EXCHANGE RATE USED IN BASIC FUEL PRICE



INTERNATIONAL PRODUCT PRICES OF BASKET USED IN BASIC FUEL PRICE



BASIC FUEL PRICE IN SA CENTS PER LITRE

